



BLACKFORD COUNTY
Community Foundation

ANNUAL **REPORT**

2022 EDITION

Celebrating 25 years of connecting you to causes you care about

TABLE OF CONTENTS

Our Mission

A Letter to You

Our Donors

Overview of Gifts and Funds

Memorials and Honorariums

Our Grants

Competitive Grants

Women of Worth Grants

Designated Fund Grants

Donor Advised Fund Grants

Our Scholarships

High School

Post Secondary

Our Involvement

Get Outdoors Campaign

Project Leadership

Your Foundation

Financials

Board and Staff

25th Anniversary

Moving Forward

A LETTER TO YOU

We began 2022 committed to making our 25th year one to celebrate and thanks to donors like you, we did just that!

As you review the details of all 2022 entailed for the Foundation, we hope you are as excited as we are about what your generosity made possible in our community. Afterall, we couldn't do what we do without donors like you!

We are looking forward to the next 25 years of connecting you to causes you care about!



Elizabeth Witt
Executive Director



Kristie Jennerjahn
Board President

OUR MISSION

Improving life in Blackford
County by helping you help
others - forever!

OUR DONORS

DOLLARS AND IMPACT

Overview of Gifts and Funds

At the Foundation we are grateful for every donation, no matter how big or small. We know that each dollar is a commitment made by you (yes, you!) to partner with us in fulfilling our mission to improve life in Blackford County.

329

G I F T S

250

D O N O R S

\$517,965

T O T A L G I F T S

OUR DONORS

DOLLARS AND IMPACT

Memorials and Honorariums

We feel privileged when you choose the Foundation to help you leave a lasting legacy for someone you love, whether it's with a memorial or an honorarium. Below is a list of all that were recognized in 2022:

In Memory of:

Robert Bales
David Bennett
Linda Bennett
Tony Brooks
Donald Brown
Rick Cain
Kelsey Clamme
Loretta Daniel
Roger Davis
Dayna Dees
Jim Dolan
Molly Dolan
Marge Emshwiller
Natalie Gardner
Andy Glentzer
Gene Hainen
Joretta Hiday
Max Hile
Nyla Hile
Jim Landis
John Leech
Patti Leeth
Paul McCaffery
Darrell McCammon

Marvin McCollum
Dixie Miller
Tina Murrell
Randy Neff
Jordan Nickols
Agnes Payne
William Payne
Richard Parker
Larry Pulley
Rex Rathbun
Marjorie "June" Reasoner
Richard Reidy
Rita Reidy
Sandy Shroyer
Mickie Smith
Sheryl Stanley
Ricky Sutton
James "Jim" Tarr
Leslie "Les" Tarr
Max Tatman
Cathy Terrel
Sue VanHorn
Troy Warmoth
Bob Wyne

In Honor of:

Jim Kline
Lou Kline
John Maddox Jr
Patty Poulson
Nalu Shewalter



Leaving a legacy for a loved one is easy at the Foundation!

Just let us know your gift is in honor or memory of someone and we'll do the rest.

JUDY BLUME

"Our fingerprints never
fade from the lives we
touch"

OUR GRANTS

Competitive Grants

There are two competitive grant cycles at the Foundation each year, allowing local nonprofits to apply for funding to support their projects and programs.

Through your generosity, the Foundation awarded **\$134,908** in 2022!



Camp
Invention



Rendezvous on
the Reserve



Disc Golf
Course



Cattle Barn and
Show Arena

Arts Place, Inc - MusicWorks Program	\$20,675
Arts Place, Inc - Arts in the Parks (2023)*	\$5,000
Blackford County 4-H and Open Fair, Inc - Cattle Barn and Show Arena*	\$34,662
Blackford County 4-H and Open Fair, Inc - Interior Painting of 4-H Building	\$600
Blackford County Schools - Camp Invention	\$5,000
Blackford County Schools - Drumline Equipment for BJSBS Band	\$5,650
Blackford Greenway, Inc - Storage Shed	\$4,500
Carey Services for Construction Cost - Career Readiness Center	\$10,000
Hartford City Parks Department - Disc Golf Course*	\$9,662
Imagination Library - Childrens Books	\$5,000
IU Health Foundation - Technology Costs for classes at Senior Citizens Center	\$3,684
Little Red Door Cancer Agency - Rides of Hope and Nutritional Supplements	\$2,500
McMillen Health - Preventative Health Education	\$5,000
Montpelier Historical Society - Rendezvous on the Reserve*	\$1,350
Project Leadership - 21st Century Scholars Enrollment and Support	\$9,625
Science Central - Science 4U Outreach Programming	\$5,000
Visiting Nurse - Marketing of Hospice and Grief Support Programs	\$2,500
Youth for Christ - Campus Life Programs*	\$4,500

*Partially funded through GIFT VII

OUR GRANTS

Women of Worth

Women of Worth (W.O.W.) has been fulfilling their mission of supporting women and children in Blackford County since 2009. Each year, members make a \$25 donation then choose which projects or organizations they'd most like their dollars to support.

Members of Women of Worth gathered at the fall luncheon in October and selected three organizations to support, awarding a total of **\$3,000!**



Arts Place, Inc



Blackford Youth Softball



Youth for Christ

Arts Place, Inc - Healing Arts Workshops	\$1,000
Blackford Youth Softball - Second Softball Field	\$1,000
Youth for Christ - Cost of Special Youth For Christ Events	\$1,000

Becoming a member of Women of Worth is easy!

Just note "W.O.W." when you send in your \$25 donation and we'll add you to the membership list.



Patty Poulson addressing the attendees of the Fall Luncheon

OUR GRANTS

Designated Funds

Numerous donors have established designated funds at the Foundation. When designated funds are established, donors choose a specific organization for their dollars to support forever. Yes, forever!

In 2022, 30 nonprofit organizations received grants from designated funds, totaling **\$139,050!**



Donor Advised Funds

Donors can also choose to establish donor advised funds to ensure the causes they're passionate about receive support. Unlike designated funds, donors aren't obligated to choose which organizations they will support. Instead, they have the flexibility to choose a variety projects and nonprofits to support over the lifetime of their fund.

Five nonprofits were awarded grants from donor advised funds in 2022, totaling **\$51,500!**

OUR GRANTS

CONTINUED

Designated Fund Grants



Alliance for Strategic Growth	\$324
Arts Place, Inc	\$3,889
Blackford County Animal Shelter	\$2,072
Cancer Support of Blackford County	\$27,577
Food for the Poor, Inc	\$5,406
Grace United Methodist Church	\$500
Habitat for Humanity International	\$5,406
Hartford City Public Library	\$27,577
Imagination Library	\$668
Juvenile Diabetes Research Foundation	\$5,406
Licking Township Trustee - Hartford City Cemetery	\$414
Mercy Home for Boys and Girls	\$5,406
Montpelier Harrison Township Cancer Fund	\$1,162
North Central Indiana Youth for Christ	\$450
Oblate Missions	\$5,406
Oddfellows Cemetery	\$1,144
St. Francis College	\$5,406
St. John's Catholic Church	\$224
St. John's Roman Catholic Church	\$2,703
St. Meinard Archabbey and Seminary	\$5,406
The Catholic Relief Services - USCC	\$2,703
The Covenant House	\$5,406
The Diocese of Lafayette Indiana	\$2,703
The Gibault Foundation	\$5,406
The Society for the Propagation of the Faith	\$5,406
Woodlawn Cemetery	\$1,804
YMCA of Muncie	\$3,674

Donor Advised Fund Grants

Blackford Youth Football	\$5,000
Fellowship of Christian Athletes	\$15,000
Grace United Methodist Church	\$15,000
St. John's Catholic Church	\$1,000
Youth for Christ - Blackford County	\$20,000

OUR SCHOLARSHIPS

HIGH SCHOOL

High School Scholarships

It is obvious to us at the Foundation that you, our donors, are just as passionate about education as we are. That's why we administer and award nearly 70 scholarships each year to graduating high school seniors. Scholarship funds at the Foundation provided **\$69,380** to the class of 2022. What an impact!

Dianna Alfrey Memorial Scholarship	Ruby Slentz
Bruce C Bade Scholarship	Kelsey Mosley
Robert Bales Memorial Scholarship	Emiley Hall
Blackford Retired Teachers Association Scholarship in Memory of Dealie Dodds and Sandy Roberson	Kiley Eppard
Harry and Arlene Bohr Memorial Scholarship	AJ Wright
Kelsey Nichole Clamme Memorial Scholarship	Noah Kitterman
Cline Cooley Nursing Scholarship	Khalia Scott
Mike Collins and Jerald E Snyder Hartford City Kiwanis Club Scholarship	Jasmine Norris
Delta Theta Tau Scholarship in Memory of Dorothy Gadbury	Kelsey Mosley
Lawrence H and M Irene Dick Memorial Scholarship	Jenna Payne
Elks Lodge No 625 Scholarship	Easton Whittig
David C Ford Memorial Scholarship	Anya Uggen
Hartford City Chamber of Commerce Scholarship	Emiley Hall
Hartford City Kiwanis Club Scholarship in Memory of Jim Evans	Emiley Hall
Hartford City Kiwanis Club Scholarship in Memory of Michael McDougall	Khalia Scott
Hartford City Kiwanis Club Scholarship in Memory of Max Mecklenburg	Madison Merkel
Hartford City Rotary Club Scholarship	Jasmine Norris
Hartford City Rotary Club Scholarship in Memory of Lloyd Hall	Sophie Jennerjhan
Ed and Ruth Henderson Memorial Scholarship	Abigail McDonald
Jones Family Farms Scholarship	Neil Marshall
Jones Family Farms Scholarship	Ruby Slentz
Travis Keplinger Memorial Scholarship	Kaylin Clamme
Paul and Delight Ely Lee Scholarship	Kiley Eppard
Levy Educational Fund Scholarship	Vanessa Carroll
Lilly Endowment Community Scholarship	Allison Zuber
Lilly Endowment Community Finalist Scholarship	Kelsey Mosley
Lilly Endowment Community Finalist Scholarship	Abigail Langdon
Lilly Endowment Community Finalist Scholarship	Khalia Scott
Lilly Endowment Community Finalist Scholarship	Ruby Slentz
Cindy K Maddox Memorial Scholarship	Abigail McDonald

OUR SCHOLARSHIPS

HIGH SCHOOL CONTINUED

John R and Jane C Maddox Family Scholarship	Kenneth Knag
Guy C and Grace Glancy Mahorney Memorial Scholarship	Kiley Eppard
Ronald A and Melanie J Mason, Steve R and Michelle Stafford and G Jewel Wilson Scholarship	Alexis Morgan
Ronald A and Melanie J Mason, Steve R and Michelle Stafford and G Jewel Wilson Scholarship	Easton Whittig
Thomas E McGeath and Jesse Lee Reynolds Memorial Scholarship	Ian Reid
Thomas E McGeath and Jesse Lee Reynolds Memorial Scholarship	Noah Kitterman
Mike Collins and Jerald E Snyder Hartford City Kiwanis Club Memorial Scholarship	Jasmine Norris
Montpelier Alumni Association Scholarship	Isaiah Miller
Montpelier Alumni Association Scholarship	Ruby Slentz
Montpelier Lions Club Scholarship	Isaiah Miller
Montpelier Lions Club Scholarship	AJ Wright
Montpelier Pony and Saddle Club Scholarship	Ian Reid
Geraldine McFerren Myers Scholarship	Kaylin Clamme
Geraldine McFerren Myers Scholarship	Jenna Payne
Geraldine McFerren Myers Scholarship	Scott Winger
Jorden W Nickols Memorial Scholarship	Macy Cagle
Hal and Gretchen Oberholzer Scholarship	Kiley Eppard
June E Overmeyer Memorial Scholarship	Abigail McDonald
Pete Redmond Family Memorial Scholarship	Abigail McDonald
Kevin Reichard Memorial Football Scholarship	Scott Winger
Frances W and Lucille Reidy Memorial Scholarship	Jarrett Emenhiser
Frances W and Lucille Reidy Memorial Scholarship	Noah Kitterman
Frances W and Winifred Reidy Memorial Scholarship	Ian Reid
Jean Ann Rhodes Memorial Baseball Scholarship	Neil Marshall
Rich Scott Memorial Scholarship	Samantha Williamson
Kim A Stump Memorial Scholarship	Faith Maloney
Dr. Severino and Karen K Sulit Passs Through Scholarship	Madison Merkel
Tri Kappa Beta Xi Chapter Vocational Scholarship	Noah Kitterman
Tri Kappa Beta Xi Chapter Academic Scholarship	Khalia Scott
Hartford City Tri Kappa Associates Scholarship in Memory of Archer and Arlo Fadely	Skye Berry
Trowel and Error Garden Club Scholarship	Ruby Slentz
Floyd and Leatha Warner Memorial Scholarship	Abigail Langdon
Floyd and Leatha Warner Memorial Scholarship	Ruby Slentz
Errol Washburn Memorial Scholarship	Kiley Eppard
Voyance and Zella Kegerreis Memorial Scholarship	Macy Cagle
Voyance and Zella Kegerreis Memorial Scholarship	Casandra Mounsey

OUR SCHOLARSHIPS

HIGH SCHOOL MEET THE RECIPIENTS



Skye Berry



Macy Cagle



Vanessa Carroll



Kaylin Clamme



Jarrett Emenhiser



Kiley Eppard



Emiley Hall



Sophia Jennerjahn



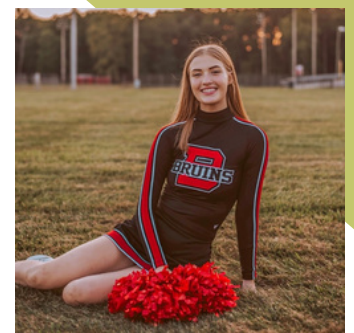
Noah Kitterman



Kenneth Knag



Abigail Langdon



Faith Maloney



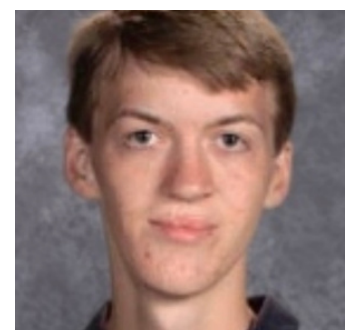
Neil Marshall



Abigail McDonald



Madison Merkel



Isaiah Miller

OUR SCHOLARSHIPS

HIGH SCHOOL MEET THE RECIPIENTS



Alexis Morgan



Kelsey Mosley



Casandra Mounsey



Jasmine Norris



Jenna Payne



Ian Reid



Khalia Scott



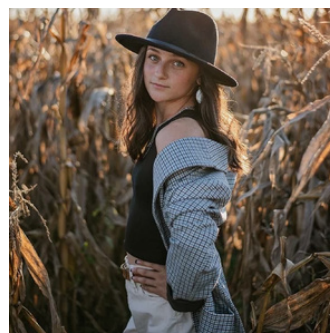
Ruby Slentz



Anya Uggen



Easton Whittig



Samantha Williamson



Scott Winger



Anthony Joseph
Wright



Allison Zuber

OUR SCHOLARSHIPS

POST SECONDARY

Post Secondary Scholarships

At the Foundation, support for education doesn't stop at high school graduation. We also offer post secondary scholarships that benefit college students and adults that are pursuing a post secondary education. Thanks to our donors, we awarded **\$12,960** in 2022!

Richard M and Ruth Flatter Memorial Scholarship
Richard M and Ruth Flatter Memorial Scholarship
Hollander Family Scholarship
Floyd E and Betty J Huffman Memorial Scholarship
Clara C Kitterman Memorial Scholarship
Donald McAfee Memorial Scholarship
Howard and Helen McCollum Family Scholarship

Shanda Miller
Haylie Williamson
Erin Davis
Dathan Milholland
Chloe Whitehurst
Lance Manley
Tyler Brown



Health Care



\$7,320



Business Management



\$2,370



Human Resources



\$3,270

OUR SCHOLARSHIPS

POST SECONDARY

\$69,380

in high school scholarships

+

\$12,960

in post secondary scholarships

=

\$82,340

scholarships awarded in 2022!

OUR INVOLVEMENT

Get Outdoors Campaign

We stand behind our mission of enhancing life for Blackford County residents, which is why we administered a community survey in 2018 as part of the GIFT VII initiative through Lilly Endowment Inc. Respondents provided us with feedback about what they love, don't love and would change about Blackford County if they could.

Their responses led to the creation of the Get Outdoors campaign, which focuses on the revitalization of greenspaces along with youth and family activities. This campaign has allowed the Foundation to be present in the community in new, fun ways! Here are some highlights from our efforts in 2022:



We hid "Get Outdoors" rocks at some of the most popular greenspaces in Blackford County! Here are the winners of the scavenger hunt with their prizes.



There's a Disc Golf Course coming to Blackford County! We donated these discs to Blackford County Schools so the students could start learning how to play in gym class. They've been a real hit, according to Tracey Witt, gym teacher at Blackford Primary School.



We hosted a Get Outdoors Trivia at the Saturday in the Park Event! Winners got to pick from numerous prizes. We also handed out resources, highlighting greenspaces and family activities.

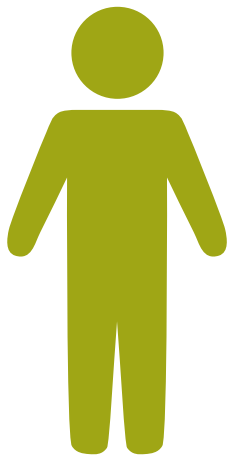
OUR INVOLVEMENT

Project Leadership

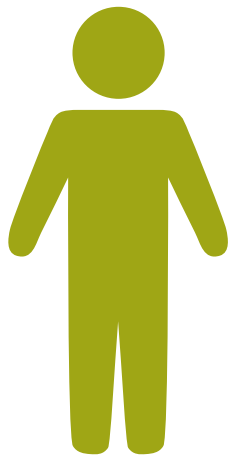
From the time a child is enrolled in Imagination Library when they're born, to when they receive a scholarship administered by the Foundation at high school graduation, we are passionate about enhancing their chances of a bright future.

Project Leadership is a nonprofit that is helping us expand our reach even further, guaranteeing that even more students have opportunities to succeed. 21st Century Scholars is a program that provides up to four years of undergraduate tuition to income-eligible students at participating colleges or universities. Prior to our collaboration with Blackford County Schools to bring Project Leadership to Blackford County, only five eligible students were enrolled in 21st Century Scholars.

Since partnering with Project Leadership in the summer of 2022, there has been a significant increase in enrollment in the 21st Century Scholars program. After students enroll, the Project Leadership team partners with them throughout their school career to ensure they also complete the steps that are required of them to maintain eligibility, securing their tuition to a four year undergraduate program at a participating college or university.



7TH GRADE
45% enrollment rate
24 of 53 eligible
students enrolled



8TH GRADE
65% enrollment Rate
29 of 45 eligible
students enrolled



OVERALL
53% enrollment rate
53 of 98 eligible
students enrolled

YOUR FOUNDATION

Financials

Statement of Financial Position
December 31, 2022 and 2021

ASSETS	2022	2021
Cash and cash equivalents	425,239	142,432
Property and equipment, net	11,642	-
Investments, at market	10,224,300	12,246,403
Noncurrent assets	85,670	82,264
TOTAL ASSETS	10,746,851	12,471,099

LIABILITIES		
Accounts payable	500	4,751
Accrued payroll taxes	3,173	2,696
Assets held for others	24,642	32,483
TOTAL LIABILITIES	28,315	39,930

Statement of Income and Expenses
December 31, 2022 and 2021

INCOME	2022	2021
Contributions	493,936	521,363
Investment income (loss), net	(1,574,904)	1,502,754
Gain (loss) on sale of assets	-	-
Other income	39,094	38,254
TOTAL INCOME	(1,041,874)	2,062,371

EXPENSES		
Grants	363,764	335,098
Scholarships	63,670	106,805
Program expenses	121,301	116,348
Management/general expenses	113,039	93,907
Fundraising expenses	8,984	6,121
	670,758	658,279
Change in net assets	(1,712,632)	1,404,092
Net assets beginning of year	12,431,169	11,027,077
Net assets at end of year	10,718,537	12,431,169

*2022 figures are unaudited, 2021 audited; when official audit results are available, changes will be recorded at blackfordcofoundation.org/about/financials.

YOUR FOUNDATION

Board and Staff

The Board of Directors is a volunteer based board and included ten members in 2022. Each member contributed high levels of insight, expertise and a passion for the community. Together, they are committed to the Foundation's mission of improving life in Blackford County by helping you help others now and forever. Yes, forever!

BOARD OF DIRECTORS

Kristie Jennerjahn, President
Mark Townsend, Vice President
Scott Blakely, Secretary
Mitch Glentzer, Treasurer
Robert Benbow
Ashley Chu
Missi Jones
Matt Langdon
Adam Lenz

RETIRING DIRECTORS

Ted Leas, 2020-2022

COMMUNITY COMMITTEE MEMBERS

Rita Bell, Grants
Vince Cimino, Investment
Julie Forcum, Grants
Diana Holsten, Scholarship



STAFF

Elizabeth Witt, Executive Director
Shelby Maddox, Donor Relations Manager
Emma Lightle, Office Manager

YOUR FOUNDATION

25th Anniversary

As we spent time reflecting on the past 25 years of the Blackford County Community Foundation, we were reminded that our impact is not our own. The continued success of the Foundation belongs to you, our donors, who are passionately committed to leading positive change in the community. We are honored that you have trusted us to be a partner in your journey!

Thanks to you, the Foundation has grown from its original assets of **\$85,000** in 1997 to **\$10 million**. With these assets, we have awarded grants to numerous nonprofits, many of which have supported programs and projects in Blackford County that you most likely have enjoyed and continue to enjoy with your families. Scholarships have been awarded to a multitude of students to support their continued learning, many were even awarded to those you know and love. The impact made in 25 years has been far-reaching, yet personal to each and every one of us (that includes you, too!).

We can't wait to partner with you while serving Blackford County over the next 25 years! Our promise to you is to be strategic with our community investments, progressive in our approach and intentional about celebrating **you**, the people that make it happen.



YOUR FOUNDATION

Moving Forward

We are ready to fulfill our promise to you over the next 25 years! So, be on the lookout for high-impact grants and scholarships, more intentional methods of stewardship to expand our impact and consistent communication with you **and** the community as a whole.

We want to communicate with you in a way that is effective and useful, so if you'd like to receive updates via e-mail, please be sure to let us know what yours is by e-mailing us at:

foundation@blackfordcounty.org.

You can also stay informed by:



Scheduling a meeting:
(765)348.3411



Following our Facebook Page:
[Facebook.com/BlackfordCoFoundation](https://www.facebook.com/BlackfordCoFoundation)



Visiting our Website:
blackfordcofoundation.org



BLACKFORD COUNTY
Community Foundation

In celebration of our 25th anniversary, we created a new logo! You'll see it on all personalized communication you receive from us, social media outlets, our website, attached to articles we've submitted or projects we've supported!



BLACKFORD COUNTY
Community Foundation

121 N High St | P.O. Box 327 | Hartford City, IN 47348
(765) 348.3411 | foundation@blackfordcounty.org | blackfordcofoundation.org