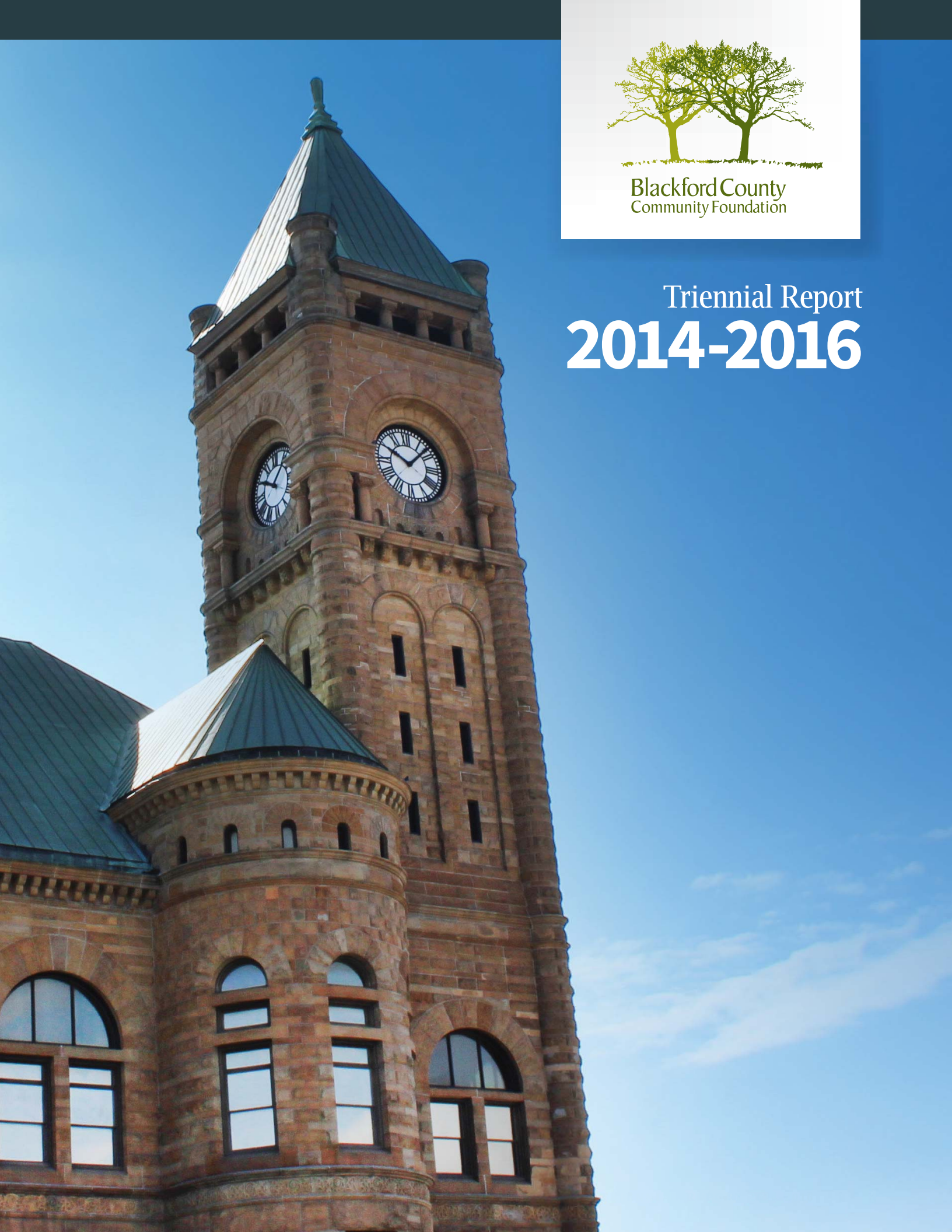




Blackford County
Community Foundation

Triennial Report 2014-2016



Dear Friends,

With your continuing help, the Blackford County Community Foundation continues its mission to make the quality of life here in Blackford County even fuller and more far-reaching as we move forward into the future. Between August 2014 and March 2016, you were the ones who contributed \$174,716 toward five community projects for immediate implementation and \$451,286 toward project funding for the future. Your phenomenal contributions over these eighteen months were especially impactful in that they drew in an additional \$500,000 in matching funds from a Lilly Endowment Inc. grant. So due to your generosity, this community now has a community walking trail from the northern edge of Hartford City to Blackford High School; much of the capital needed for an expansion of the Blackford County Animal Shelter; a study of possible environmental links to relatively high cancer rates in the county; equipment for a teen mentoring program based on Christian hunting and fishing experiences; a small transit bus for community events; and additional funding for seven local scholarships and eleven local nonprofit organizations and their continuing programs.

You are the reason for these community successes. Your pride in this community and your willingness to put your resources of time, energy, and money behind these various initiatives makes Blackford County a better and better place to live and raise a family in the twenty-first century.

Sincerely,

Lisa Weeks

Lisa Weeks
Board President

David Bowman

David A. Bowman
Executive Director



Contents

Building Foundation's Funds	3
Greenway Trail Project	3
Donor's New Dreams	4
Establishing a Fund	5
Because of Your Generosity	6
Community Projects Funded	7
Scholarship Awards	8
Making a Promise	11
Focus on Lilly Endowment Scholars	12
Postsecondary Scholarship Awards	12
Donors 2014 – 2016	13
Memorials and Honorariums	19
Financial Statements	20
Board of Directors	22
Staff	23



BUILDING THE FOUNDATION'S FUNDS FOR THE DISTANT FUTURE

In late 2014, the Blackford County Community Foundation was given a \$500,000 grant from Lilly Endowment Inc. to match with local donors' contributions to the Foundation's endowment funds (funds that provide grants forever) and to local community projects. By the end of the Endowment's match period in March 2016, five projects had been funded (see more on p. 8) .

In addition to those projects, the community donated another \$570,659 over the eighteen month period. When added to the Lilly Endowment match, more than \$560,000 was added to endowment funds available forever and another \$450,000 was added to flexible use funds available as needed now or further into the future for continued Foundation grantmaking.

This community fundraising effort was a large step forward in sustaining and enhancing local nonprofit programming.



The greenway includes almost two miles of scenic countryside, including a walkway alongside old forest growth trees.

FOUNDATION'S LILLY ENDOWMENT MATCH PROGRAM 2014-2016 HELPED GREENWAY TRAIL PROJECT REACH FRUITION

Private donations to the Blackford County High School Trail project provided part of the funding needed to make the Blackford Greenway, Inc.'s vision of a hiking trail a reality in the fall of 2017. The trail stretches 1.94 miles from Park Avenue just west of the intersection with Walnut Street in Hartford City to the parking lot near the Blackford High School Cleathouse and the Blackford County Youth Soccer Complex.

Blackford Greenway, Inc., is a local nonprofit organization that was incorporated in 2004 when the group began discussing the prospect of developing a walking/biking trail in Blackford County. Five years ago, this group envisioned the current greenway and began fundraising the necessary \$1.25 million. The group wrote multiple grants to state and federal agencies that in the end provided 80% of the funds. Other monies came from local redevelopment funds and almost \$30,000 from donors in Blackford County who contributed through the Lilly Endowment GIFT VI program at the Foundation.

The Trail will open officially on November 29 with a ribbon cutting ceremony to be scheduled later. Additional amenities for a trail head entryway, parking areas, and other improvements are already on the drawing board for the Blackford Greenway.

DONORS' NEW DREAMS

Since 2014, the Foundation has hosted 27 new funds. Those funds were evenly divided between support for specific short term community projects and support for specific nonprofit organizations and their missions over the long term.



The Blackford County Arts Center has two new funds to support its programs.

The Blackford County Animal Shelter initiated its Facility Fund to expand and update its physical spaces.



DESIGNATED FUNDS

ARTS PLACE BLACKFORD COUNTY ARTS CENTER FUND IN MEMORY OF SARAH L. GARRETT

The family of Sarah Garrett established this fund in 2014 in order to offer continuing support for Blackford County Arts Center programs promoting the arts.

BLACKFORD COUNTY ANIMAL SHELTER FACILITY FUND

Numerous donors contributed to this project fund begun in 2015 that is dedicated to updating and expanding the current Blackford County Animal Shelter.

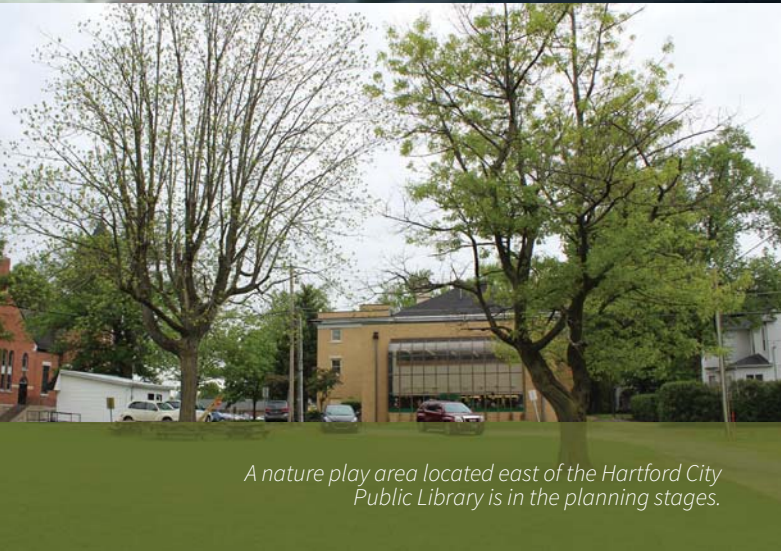
BLACKFORD COUNTY CONCERNED CITIZENS FUND

A group of local citizens created this fund in 2015 to provide community outreach and education on reducing cancer and neurological disease risk in the community.

The Youth Soccer League started a fund to provide for upkeep of its facilities.



The 2014 flooding prompted community leaders to start a fund dedicated to helping victims with extensive repairs.



A nature play area located east of the Hartford City Public Library is in the planning stages.

BLACKFORD COUNTY HIGH SCHOOL TRAIL FUND

This fund was created in 2014 to provide monies for the walking trail project from the north edge of Hartford City to the soccer fields and Blackford High School.

BLACKFORD COUNTY PROMISE 529 FUND

In 2016, 5 local government entities and businesses provided funds for matching local students' contributions to new college savings accounts beginning with kindergarten through third grade students.

BLACKFORD COUNTY YMCA BUS FUND

A group of Y supporters started this fund in 2014 in order to purchase a bus for transporting Y patrons to events.

BLACKFORD LONG-TERM RECOVERY GROUP FUND

After the record flooding of 2014, local community leaders established this fund to help the victims of this disaster repair the damage to their homes.

BLACKFORD YOUTH SOCCER LEAGUE FUND

This fund begun in 2015 provides an annual payment to the Youth Soccer League for upkeep and operations at the Blackford Youth Soccer League complex.

CHRISTIAN OUTDOOR MINISTRY EXPERIENCE (C.O.M.E.) FUND

A local group of volunteers mentor young people in a Christian atmosphere using an outdoor hunting and fishing sports program as its vehicle.

JACK AND GOLLY FORCUM ARTS PLACE INC./BLACKFORD COUNTY ARTS CENTER FUND

In memory of Jack and Golly Forcum, the family started a fund in 2014 to provide annual funding for the Blackford Arts Center programs, all of which encourage local participation in the arts.

HARTFORD CITY CEMETERY ASSOCIATION, INC., FUND

Begun in 2014, this fund provides support each year for the upkeep of the cemetery grounds.

BLACKFORD UNITED WAY INC. DOLLY PARTON IMAGINATION LIBRARY ENDOWMENT FUND

This fund was established in 2014 to provide additional ongoing financial support to the local program that sends a book each month to preschoolers.

NATURE PLAY CONSTRUCTION FUND

This fund was created in 2016 to provide for construction and upkeep to a nature playscape located east of the Hartford City Public Library.

HAL OBERHOLZER HOOVER PARK BASKETBALL COURT FUND

In memory of Hal Oberholzer, his family established a fund to provide repairs and upkeep to the basketball court located at Hoover Park in Hartford City.

SCHANTZ ENDOWMENT FUND

William and Patricia Schantz created this fund to provide annual support to the many charitable organizations they supported throughout their lifetimes.

DONOR ADVISED FUNDS

JENNERJAHN ADVISED PASS-THROUGH FUND

Brian and Ruth Jennerjahn created a fund in 2014 to provide awards for several programs they established for honoring local teachers and students.

MONTPELIER AMERICAN LEGION VETERANS ASSISTANCE FUND

A group of Montpelier civic leaders and veterans established this fund in 2015 to provide educational and social help to local veterans in need.

SHREVES-POULSON COMMUNITY DONOR ADVISED ENDOWMENT FUND

This fund was created by Patty Shreves-Poulson in 2015 in memory of Jerry W. Shreves and Jerry J. Poulson to support community causes such as The Salvation Army's Emergency Assistance Program in Blackford County.

SCHOLARSHIPS

ROBERT L. BALES MEMORIAL SCHOLARSHIP FUND

The Bales family created this fund in memory of Robert Bales in 2015 to support a student attending a vocational school or program.

CLINE-COOLEY NURSING SCHOLARSHIP FUND

Hazel Cline started this scholarship in 2016 to be given annually to a student studying nursing.

PAUL AND DELIGHT ELY LEE SCHOLARSHIP FUND

The Lee's daughter created this scholarship in 2016 to support a student studying education.

HELEN AND HOWARD MCCOLLUM FAMILY SCHOLARSHIP FUND

Mrs. McCollum began this fund in 2015 to provide a scholarship to a student already studying in a two- or four-year program.

THOMAS E. MCGEATH AND JESSE LEE REYNOLDS MEMORIAL SCHOLARSHIP FUND

Joan McGeath started this fund in 2014 to provide two scholarships annually to students studying education.

MONTPELIER PONY AND SADDLE CLUB FUND

This scholarship was created in 2016 with funds from the Montpelier Pony and Saddle Club for a student who has been a 4-H Horse and Pony Club member.

PETE REDMOND FAMILY MEMORIAL SCHOLARSHIP FUND

The Redmond family established this scholarship in 2014 to support student studying for a career in education.

The Oberholzers established a fund to maintain the basketball court at Hoover Park.



Blackford High School seniors received 77 scholarships from the Foundation in May of 2017, including these eight new ones.

DR. SEVERINO T. AND KAREN K. SULIT PASS THROUGH SCHOLARSHIP FUND

In 2014, Karen Sulit started this scholarship for a student studying in a medical field.

UNRESTRICTED

CHARLES AND BETTY WALKER UNRESTRICTED FUND

The Walkers began this fund in 2015 to provide grants to local community projects.

Establishing a Fund

The Foundation manages a set of community "savings accounts" in which donors can deposit funds for Blackford County's needs, either current or future. Donors can, in fact, begin a fund to support their particular interests.

Temporary funds (or pass-throughs) provide grants and scholarships for current needs until the fund is depleted.

Permanent funds (or endowments) provide grants and scholarships for current needs with its yearly earned interest and for future needs by continuing to earn interest forever.

Either kind of fund can be used to support a general interest or a specific charitable cause or organization.

BECAUSE OF YOUR GENEROSITY...

The Foundation was able to distribute \$586,111 in grants from 2014 through 2016. That amount was over \$170,000 more than in the previous three-year period. These grants went to 55 different nonprofits and community groups for 151 different projects. Half of these projects served the youth population in Blackford County.



In July 2016 several community organizations and the city of Hartford City partnered with Tori's Butterfly Garden Foundation, Inc., to sponsor SummerFest, a celebration of local art and artisans, partially supported by a grant from the Foundation.

Community Grants \$205,584

Blackford County 4-H Fair Board
Blackford County Animal Shelter
Blackford County Civil War Reenactment Club Inc.
Blackford County Economic Development Corporation
Blackford United Way Inc.
Blackford Youth Soccer League
Fellowship of Christian Athletes
Grace United Methodist Church
Hartford City Cemetery Association
Hartford City Public Library
Hartford City Rotary Club
Montpelier Civic Center
Montpelier Kiwanis Club
Montpelier Lions Club
Montpelier Youth League
Montpelier-Harrison Township Public Library
North Central Indiana Youth for Christ
Oddfellows Cemetery
St. John the Evangelist Church
Swing of Faith
Woodlawn Cemetery
Young Men's Christian Association of Muncie, IN

Cultural Grants \$89,851

Arts Place Inc.
The Good Seed Initiative Inc.
Tori's Butterfly Garden Foundation Inc.

Educational Grants \$184,503

Alliance for Strategic Growth Inc.
Blackford County 4-H Council
Blackford County Career Success Coalition
Blackford County Promise
Blackford County Purdue University Extension Service
Blackford County Schools

Blackford Softball Inc.
Christian Outdoor Ministry Experience
The Good Seed Initiative Inc.
Hartford City and Montpelier Head Start
Hartford City Public Library
Helen Lieber Preschool
Imagination Library of Blackford County
Montpelier-Harrison Township Public Library
Science Central
Treehouse Preschool
Youth Service Bureau of Jay County Inc.

Health Grants \$14,684

Blackford County Concerned Citizens
Blackford County Schools
Montpelier Civic Center
Montpelier-Harrison Township Cancer Fund
Tri Kappa Sorority

Social Services Grants \$91,159

A Better Way Services Inc.
Blackford County Schools
Blackford County Senior Citizens Center
Blackford County Young Men's Christian Association
Carey Services Inc.
Community and Family Services
The Good Seed Initiative Inc.
Helping Hands Pregnancy Resource Center
LifeStream Services Inc.
Mental Health Association of Blackford County
Psi Iota Xi Sorority, Alpha Mu Chapter
The Salvation Army
Schuller Stables
Second Harvest Food Bank
St. John XXIII Center

COMMUNITY PROJECTS FUNDED BY LILLY ENDOWMENT INC. MATCHING GRANT

In addition to awarding regular grants and distributions over the past three years, the Foundation participated in an initiative from the Lilly Endowment Inc. that provided an additional \$264,554 to five more community projects during that time.

The Lilly Endowment Inc. GIFT VI initiative was an 18-month program that matched funds for donations made to the Blackford County Community Foundation from October 2014 through March 2016. A part of those funds helped to support these five community projects.



One end of the walking trail is located at the Blackford High School Cleat House and the Blackford Youth Soccer Complex. The construction will be completed in late November 2017.

BLACKFORD COUNTY ANIMAL SHELTER

The Shelter is embarking on a facility upgrade and expansion as its need to provide for more animals has increased over the past few years.

BLACKFORD COUNTY CONCERNED CITIZENS

The BCCC hired a consultant to research the possible local sites that might contain health contaminants that may present local health hazards and then to educate the public on any findings.

BLACKFORD COUNTY HIGH SCHOOL TRAIL

This project will provide a walking trail from the north side of Hartford City to the grounds of Blackford High School.

CHRISTIAN OUTDOOR MINISTRY EXPERIENCE

A local group of Christian sportsmen are providing instruction in fishing and hunting sports to local teens along with a mentoring relationship.

YOUNG MEN'S CHRISTIAN ASSOCIATION

The Blackford County YMCA purchased a small bus to transport Y patrons from one Y venue to another within the county and so expanded their program options.



Christian Outdoor Ministry Experience (C.O.M.E.) provides mentoring to young people in Christian outdoor sports experiences throughout the year.

Over the last three years, the Blackford County Animal Shelter has been taking in more and more homeless animals. The facilities need to be updated and expanded. Donations and matching grant funds for \$213,296 is helping fund the Shelter's capital project.



SCHOLARSHIPS

Scholarships are an important aspect of the Foundation's grantmaking. Over the past three years, the Blackford County Community Foundation awarded 243 scholarships to local high school graduates, a grand total of \$259,655.



3M Scholarship

Kaylee C. Sims (2014)
Mason Riddle (2015)
Aaron Moore (2016)

Dianna M. Alfrey Memorial Scholarship

Tricia M. Withers (2014)
Kendra Wilson (2015)
Katie Kaufman (2016)

Judge Bruce C. Bade Community Scholarship

Lauren M. Bailey (2014)
Maysie Hayden (2015)
Jacob Confer (2016)

Blackford Agriculture Scholarship

Joshua D. Stanley (2014)

Blackford County Republican Central Committee Scholarship

Francesca N. Daizovi (2014)
Yadira Navarro (2015)
Austin Langdon (2016)

Blackford Retired Teachers Association Scholarship

Felicia L. Fuller (2014)
Alex Huff (2015)
Katie Kaufman (2016)

Harry and Arlene Bohr Memorial Scholarship

Logan M. Roberts (2014)
Nathaniel Goodson (2015)
Alexandra Jennerjahn (2016)

Erma Bradford Memorial Scholarship

Ashley R. Bolt (2014)
Richan Anderson (2015)
Lorine Pluimer (2016)

Vincent F. and Anna C. Cimino Community Scholarship

Heaston J. Wilson (2014)
Mason Riddle (2015)
Shelby Sullivan (2016)

Josh Coleman Memorial Scholarship

Zach C. Morgan (2014)
Perry Clamme (2015)
Caitlyn Jones (2016)

Mike Collins and Jerald E. Snyder Hartford City Kiwanis Memorial Scholarship

Whitley Felver (2016)

Delta Theta Tau Scholarship in Memory of Dorothy Gadbury

Catherine A. Anderson (2014)
Majeska Cronkite (2015)
Hope Roe (2016)

Lawrence H. and M. Irene Dick Memorial Scholarship

Jenna N. Coleman (2014)
Blake Thiery (2015)
Ashley Thurman (2016)

David C. Ford Memorial Scholarship

Cody P. Oswalt (2014)
Skyler Cook (2015)
Jacob Confer (2016)

Earl Greaf Memorial Scholarship

Kyle Holsten J. (2014)
Joshua D. Stanley (2014)
Ashley Johnson (2015)
Kirsten Kreischer (2015)
Troy Blake (2016)
Jessica Williams (2016)

Hartford City Chamber of Commerce Scholarship

Whitney B. Bliss (2014)
Zachary Barnes (2016)

Hartford City Elks Lodge No. 625 Scholarship

Hayley L. Confer (2014)
Elizabeth A. Mattson (2014)
Madison Clock (2015)
Dustin Jenkins (2015)
Cameron Orr (2015)
Rachel Shade (2015)
Hayley Overmyer (2016)

Hartford City Kiwanis Scholarship in Memory of Jim Evans

Tryse A. Hendricks (2014)
Kendall Day (2015)
Nathan Thomas (2016)

Hartford City Kiwanis Scholarship in Memory of Michael McDougall

Ashley R. Bolt (2014)
Alyson Ferguson (2015)
Jessica Millikan (2016)

Hartford City Kiwanis Scholarship in Memory of Max Mecklenburg

Celina L. Conley (2014)
Haley Jenkinson (2015)
Brodie Barnes (2016)

Hartford City Rotary Scholarship

Taylor N. Waddell (2014)
Rachel Sugas (2015)
Elayna Justice (2016)

Hartford City Rotary Scholarship in Memory of E. P. Blackburn

Kaleigh R. Thurman (2014)
Kendal Cowgill (2015)

Ariel Haffner (2016)

Hartford City Tri Kappa Associates Scholarship in Memory of Martha Archer and Arlo Fadely

Tori L. Stinson (2014)
Amber Maddox (2015)
Emily Bacon (2016)

Hartford City Tri Kappa Beta Xi Chapter Academic Scholarship

Emily B. McCaffery (2014)
Kelsey Teeple (2015)
Chasen Edmonds (2016)

Hartford City Tri Kappa Beta Xi Chapter Vocational Scholarship

Cheianne L. Mosley (2014)
Desirae Fraley (2015)
Cortni Hedden (2016)

Ed and Ruth Henderson Memorial Scholarship

Krista L. White (2014)
Maggie Weeks-Foy (2015)
Brianna Caldwell (2016)

Floyd and Betty Huffman Memorial Scholarship

J. Trace Oswalt (2014)

Jones Family Farms Scholarship

Chandler L. Piercy (2014)
Rebecca R. Shade (2014)
Kobe Peden (2015)
McKaelin Townsend (2015)
Chanc Daugherty (2016)
Sadie Nickles (2016)

Voyance and Zella Kegerreis Memorial Scholarship

Samuel T. Edwards (2014)
Rachel Paquin (2015)
Jessica Millikan (2016)

Travis R. Keplinger Memorial Scholarship

Allissa M. Sands (2014)
Wyatt Maddox (2015)
Ethan Henderson (2016)

Clara Kitterman Memorial Scholarship

Janell C. Barker (2014)
Jenna N. Coleman (2014)
Scott M. Dodd (2014)
Sabrina L. Peters (2014)
Madison Blakely (2015)
Sara Whitesell (2015)
Victoria Bauer (2016)
Kylie Keifer (2016)

Levy Educational Foundation Scholarship

Austin C. Coons (2014)
Donald W. Green, Jr. (2014)
Wesley D. Pierson (2014)
Sierra M. Southworth (2014)
Hunter D. Tobey (2014)
Tarick A. Townsend (2014)
Margaret Buettner (2015)
Tara Dodd (2015)
Tyler Dodd (2015)
Victoria Eppard (2015)
Shannon Walker (2015)

Bailey Elkins (2016)
Whitley Felver (2016)
Chase Overla (2016)
Nicholas Price (2016)
Joel Sharp (2016)

Lilly Endowment Community Scholarship

Makyla M. Mansfield (2014)
Laura Sills (2015)
Punit Patel (2016)

Lilly Endowment Community Scholarship Finalist Scholarship

Janell C. Barker (2014)
Felicia L. Fuller (2014)
Kirsti A. Reed (2014)
Tiffani A. Rodgers (2014)
Amber M. Underwood (2014)
Alyson Ferguson (2015)
Amber Maddox (2015)
Yadira Navarro (2015)
Devin Tarr (2015)
Sara Carpenter (2016)
Kylie Keifer (2016)
Kara Slusser (2016)

Cindy K. Maddox Memorial Scholarship

Krista L. White (2014)
Hannah Simmons (2015)
Bailey Cline (2016)

John R. and Jane C. Maddox Family Scholarship

Mackenzie S. Cox (2014)
Lauren Godfrey (2015)
Devon Kirkwood (2016)

Guy C. and Grace Glancy Mahorney Memorial Scholarship

Cody P. Oswalt (2014)
Rachel Moore (2015)
Brianna Caldwell (2016)

Ronald A. and Melanie J. Mason, Steve R. and Michelle Stafford, and G. Jewel Wilson Scholarship

Darren W. DuBois (2014)
Damon S. Vallad (2014)
Kendal Cowgill (2015)
Carrie Love (2015)
Victoria Bauer (2016)
Kylie Keifer (2016)

Thomas E. McGeath and Jesse Lee Reynolds Memorial Scholarship

Aaron Moore (2016)
Evan Jones (2016)

Paul and Dorothy McKee, Marilyn McKee Tindall and Rosemary McKee Lanham Memorial Scholarship

Tiffani A. Rodgers (2014)
Claire Seelen (2015)
Bailey Cline (2016)

Montpelier Alumni Association Scholarship

Savannah M. Fernandes (2014)
Travis J. Scriba (2014)
Katie Garrett (2015)
Wyatt Maddox (2015)
Bailey Elkins (2016)

- Arrianne Moore (2016)
- Montpelier Lions Club Scholarship**
 Drake E. Cogan (2014)
 Wyatt Maddox (2015)
 Jaycob Kinder (2016)
- Charles Glen Morgan Memorial Scholarship**
 Trevor A. Doughty (2014)
 Jasmine Gearheart (2015)
 Caitlyn Jones (2016)
- Geraldine McFerren Myers Scholarship**
 Kathryn L. Apple (2014)
 Erin M. Davis (2014)
 Savannah M. Fernandes (2014)
 Craig M. Thiery (2014)
 Lauren Godfrey (2015)
 Cameron Orr (2015)
 Kyle Orr (2015)
 Maggie Weeks-Foy (2015)
 Alexandra Jennerjahn (2016)
 Addisyn Schick (2016)
- Robert C. Neel Memorial Scholarship**
 Haley D. Ward (2014)
 Meghan Holst (2015)
 Devon Kirkwood (2016)
- Jorden W. Nickols Memorial Scholarship**
 Cassandra E. Emerson (2014)
 Skyler Cook (2015)
 Jacob Confer (2016)
- Hal and Gretchen Oberholzer Scholarship**
 Sierra M. Southworth (2014)
 Breanna Piercy (2015)
 Addison Schick (2016)
- June E. Overmeyer Memorial Scholarship**
 Taylor L. Batten (2014)
 Destinee Jones (2015)
 Jarron Morris (2016)
- Pete Redmond Family Scholarship**
 Hannah Gearheart (2015)
 Brianna Caldwell (2016)
- Kevin P. Reichard Memorial Football Scholarship**
 Shelby C. Strine (2014)
 Jacob Tobey (2015)
 Stormie Adney (2016)
- Francis W. and Lucille M. Reidy Memorial Scholarship**
 Ashley R. Hutson (2014)
 Zach C. Morgan (2014)
 Nathan Barnard (2015)
 McKaelin Townsend (2015)
 Jordon Pryor (2016)
 Abigail Ramey (2016)
- Francis W. and Winifred Reidy Memorial Scholarship**
 Darren W. DuBois (2014)
 Cheianne L. Mosley (2014)
 Kirstin Kreischer (2015)
 Levi Sells (2015)
 Cullen Clamme (2016)
 Meghan Foster (2016)
- Betty L. and Robert W. Renner Community Scholarship**
 Rachael M. Baker (2014)
 Hannah Gearheart (2015)
 Andie Reidy (2016)
- Jean Ann Rhodes Memorial Baseball Scholarship**
 Scott M. Dodd (2014)
 Devon Kirkwood (2016)
- Roth Family Scholarship**
 Hannah N. Lex (2014)
 Marci Thurman (2015)
 Paige Graham (2016)
- William E. and Patricia A. Schantz Community Scholarship**
 Amber M. Underwood (2014)
 Rachel Moore (2015)
 Kara Slusser (2016)
- Miss Nancy S. Schorey, BSN, MSN, Registered Nurse Memorial Scholarship**
 Kaitlin M. Nuckols (2014)
- Rich Scott Memorial Music Scholarship**
 Marissa L. McWhirt (2014)
 Kyle Orr (2015)
 Conner Bosworth (2016)
- Kim A. Stump Memorial Scholarship**
 Adam C. Jennerjahn (2014)
 Kendra Wilson (2015)
 Peyton Hiestand (2016)
- Maria Torres Sulit Memorial Scholarship**
 Hannah N. Lex (2014)
 Blake Thiery (2015)
 Kila Priest (2016)
- Dr. Severino and Karen Sulit Charitable Foundation Scholarship**
 J. Trace Oswalt (2014)
 Marci Thurman (2015)
 Joel Sharp (2016)
- Trowel and Error Garden Club Scholarship**
 Alexandra P. Willmann (2014)
 Jayda Landers (2015)
 Ashley Thurman (2016)
- Floyd and Leatha Warner Memorial Scholarship**
 Jordan D. Pimental (2014)
 Alexander M. Reidy (2014)
 Zoie Mann (2015)
 Darci Robertson (2015)
 Nicholas Henderson (2016)
 Rachel Rhoton (2016)
- Errol H. Washburn Memorial Scholarship**
 Michael V. Winters (2014)
 Hannah Simmons (2015)
 Katie Kaufman (2016)
- Winter Wanderers Snowmobile Club Scholarship**
 Corbin A. Duckworth (2014)
- Young Family Charitable Scholarship**
 Kirsti A. Reed (2014)
 Adrianna Lancaster (2015)
 Sara Carpenter (2016)

FOCUS ON LILLY COMMUNITY SCHOLARS

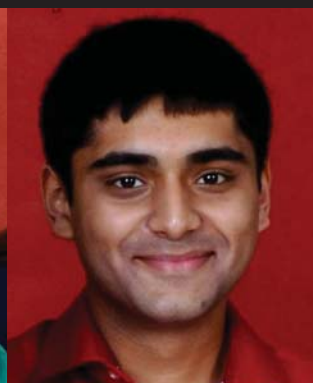
Lilly Endowment Inc. began a long term project in 1998 to keep talented Indiana high school graduates in Indiana by offering four-year, full-tuition plus book stipend scholarships to any Indiana college.



2014
Makyla M. Mansfield
Taylor University
Social Work



2015
Laura C. Sills
University of Evansville
Archaeology



2016
Punit B. Patel
Purdue University
Biology

Postsecondary Scholarship Awards

Students who have completed at least one semester of a college or a vocational course of study are eligible for these scholarships.

Floyd and Betty Huffman Memorial Scholarship

Scott Dodd (2015)
Hope Miller (2015)
J. Trace Oswalt (2015)
Kirsti Reed (2015)

Voyance and Zella Kegerreis Memorial Scholarship

Mackenzie Confer (2014)
Ali Norton (2014)
Karli Reed (2014)
Christine Sills (2014)
Brodie Sones (2014)
Donnie Strine (2014)
Gavin Strine (2014)
Carly Weeks-Foy (2014)
Lauren Willmann (2014)
Sarah Withers (2014)
Elizabeth Witt (2014)
Kathryn Apple (2015)
Blake Buchanan (2015)
Marcus Ellis (2015)
Pam Fancher (2015)
Savannah Fernandes (2015)
Darien Foster (2015)
William Gearheart (2015)
Madison Harrold (2015)
Megan Justice (2015)
Haley Leas (2015)
Hannah Lex (2015)
Kaitlin Nuckols (2015)
Marcus Price (2015)
Karli Reed (2015)
Haleigh Schrock (2015)

Brodie Sones (2015)
Sierra Southworth (2015)
Gavin Strine (2015)
Brittany Swartz (2015)
Krista White (2015)
Elizabeth Witt (2015)
Richan Anderson (2016)
Kathryn Apple (2016)
Lacie Bailey (2016)
Derrek Barnes (2016)
Madison Blakely (2016)
Kendal Cowgill (2016)
Scott Dodd (2016)
Cassandra Emerson (2016)
Jeremy Emerson (2016)
Pam Fancher (2016)
Savannah Fernandes (2016)
Michael Gearheart (2016)
William Gearheart (2016)
Jeffery Gilland (2016)
Ethan Harriett (2016)
Madison Harrold (2016)
Bailey Landis (2016)
Haley Leas (2016)
Hannah Lex (2016)
Hope Miller (2016)

Betty L. and Robert W. Renner Community Scholarship

Derrek Barnes (2014)
Kayla Boughman (2014)
Olivia Cale (2014)
Delilah Earls (2014)
Amanda Ervin (2014)
Brittany Gardner (2014)

Emily Gardner (2014)
Michael Gearheart (2014)
William Gearheart (2014)
Ethan Harriett (2014)
Madison Harrold (2014)
Kathryn Hines (2014)
Sara Johnson (2014)
Megan Justice (2014)
Bailey Landis (2014)
Haley Leas (2014)
Andrew Mahan (2014)
Karen Mealy (2014)
Hope Miller (2014)
Holly Musselman (2014)
Haleigh Schrock (2014)
Brook Shell (2014)
Olivia Cale (2015)
Amanda Ervin (2015)
Emily Gardner (2015)
Ethan Harriett (2015)
Bailey Landis (2015)
Andrew Mahan (2015)
Ali Norton (2015)
Cynthia Stotlar (2015)
Rachel Moore (2016)
Krysta Nickles (2016)
Ali Norton (2016)
Kaitlin Nuckols (2016)
Cameron Orr (2016)
Kyle Orr (2016)
Marcus Price (2016)
Kirsti Reed (2016)
Sierra Southworth (2016)
Brittany Swartz (2016)
Krista White (2016)

MAKING A PROMISE TO THE YOUNG PEOPLE OF BLACKFORD COUNTY

In the spring of 2016, the Blackford County Community Foundation partnered with Blackford County Schools, the Blackford County Economic Development Corp., Citizens State Bank and the YMCA on a project to support our Blackford County youth in pursuing education and career training after high school graduation. The Blackford County Promise program was specifically instituted to help local families set their children on the path to career planning.

Blackford County Promise is affiliated with the state initiative called Promise Indiana. Every member organization seeks to ensure that every child in the community has the assets, the family and friends circle of supporters, and the whole community itself to help that child pursue his or her career dream. Research has shown, for example, that men who complete a bachelor's degree earn \$660,000 (adjusted dollars) more in their lifetimes than men completing high school alone. Comparable earnings gaps exist for any additional level of education.

So Blackford County Promise committed to helping youngsters' families take the necessary steps toward obtaining that advanced education. The Promise is helping start the

conversations about a child's dream for the future, start a CollegeChoice 529 savings account for each child at school by providing an initial \$25 investment that comes from community sponsors, and encourage a group of family and friends to provide support for each child. These are people who can invest in the child's future through monetary gifts to a 529 account and can encourage that child to pursue his or her career dreams.

In 2016 the Blackford County Promise took the first step by enrolling 308 Blackford County kindergarten through third grade students in a CollegeChoice 529 account. The Foundation had the honor of contributing that first \$25 toward fulfilling the hopes and dreams of these students. Community dollars were then used to provide an additional \$50 match to every child's account that raised \$25 last October. Community donations will continue to provide additional opportunities for these 529 accounts to grow over the next decade before these students make their educational plans upon high school graduation. Each year the incoming kindergarten class will also be encouraged to enroll using similar kinds of matching donations.

Blackford County's youngest students were invited to open a CollegeChoice 529 savings account at school registration. Each student received a pig for collecting his/her first \$25 contribution



Thank you...2014 -2016 Donors

3M Foundation	Stephen and Jennifer Barnes	John and Nancy Bonvillian	William and Nellie Campbell
4Pampered Paws	Judy Barnett	David and Monica Booker	Terry and Teresa Capper
The Abbott Family	J. Neal Barnum	Eric and Jo Anne Boots	Gail Carmody
John and Rebecca Abbott	John Nicholas and Jessica Barry	Dan and Helen Borgenheimer	Arthur and Nancy Carnes
AL and Elizabeth Adams	Robert and Nancy Barry	John and Margaret Boucher	Joseph and Kelley Carpenter
Jane Adams	Kevin and Teresa Basey	Richard Bowden	James and Cecelia Carse
James and Esther Adkins	Brian Bauer	Dave Bowman	Jerry and Noritta Carter
ADM Custom Woodworking	Daniel and Susan Baughey	Gary Don and Carolyn Bowman	Richard and Mary Cary
AEP Veteran and Retiree Association	Donald and Mary Beal	James and Kenna Bradfield	John Aaron Castelo
Ag Best, LLC	Cathy Beckett	Todd and Laurie Brandon	Joseph and Sinuard Castelo
AIG	Kyle and Annie Bedwell	Kapatha Branstrator	Sheila Casterline
Gary and Julie Alexander	Cecil and Deborah Beeson	Roy and Mary Bricker	Beth Cedarholm
American House, LLC	Lee Allen and Rita Bell	Robert and Jo Ann Bridge	Marianne Celce-Murcia
American Laser Enterprises, LLC	Robert and Donna Benbow	Ann Brigner	Central Indiana Orthopedics
American Legion Auxiliary	Arlan and Nancy Bennett	Doug and Vicki Brinson	Rex and Anne Chaney
American Legion Post No. 156	Cara Bennett	Richard and Carol Brock	Gary and Debbie Cheesman
Amvets Riders Post 23	David and Linda Bennett	David and Betty Brockelman	Chemscape, Inc.
Paul and Rita Anderson	Brion and Sheila Bertsch	Bronson Education Association	Jane Chew
Stefan and Joan Anderson	Beta Sigma Phi	The Broukie Family	Thomas and Margaret Christie
Rose Angelo	Bethel United Methodist Church	Betty Jean Brown	Daniel and Sara Christman
Galen and Pam Anspaugh	Todd and Amy Biedenham	Darrell Brown	Vincent and Anna Cimino
Anna Belle Arbuckle	Kathryn Bird	Phyllis Brown	Citizens State Bank
Dennis and Kristine Arcand	Rodney and Ruth Ann Black	Randall and Rita Brown	City of Hartford City
Betty Jo Armstrong	Blackford Bruin Boosters	Rollin Brown	James and Elizabeth Claghorn
Ron and Betsy Armstrong	Blackford County Extension Homemakers Association	Tom Brown	Katherine Clamme
Stuart and Jackie Armstrong	Blackford County Republican Central Committee	Warren and Cheri Brown	Patricia Clamme
Thomas and Vikki Armstrong	Blackford Community Hospital Auxiliary	Kathleen Browning	Robyn Clamme
William and Peggy Armstrong	Blackford County Highway Department	Bruex Family Revocable Trust	Ronald and Robin Clamme
Elaine Arnold	Blackford County Treasurer	Carolyn Bruex	Stanley Clamme
Steven and Beverly Arnold	Blackford United Way, Inc.	Robert Burns	William and Brenda Clapper
Margaret Aul	Blackford Federation of Teachers	Donald and Lila Burnworth	Cathy Clark
Thomas and Claire Aulbach	Blackford High School	Jane Burnworth	Ron and Mary Clark
Wanda Ausman	Blackford High School Faculty and Staff	Jack and Shirley Burson	Marion and Ruth Ann Clawson
Bade and Bade	Blackford High School Key Club	Edwin Bush II	Michael Claytor
Bruce and Kathleen Bade	Blackford High School Student Council	Pauline Buss	Clear Choice Chiropractic
Perry Bailey	Marlin and Nancy Ann Blakey	Lawrence and Caryl Busse	Thomas and Melinda Clester
Sherry Bailey	Charles Bole	Gary and Connie Bussell	M. Randall and Virginia Clevenger
Michael and Cindy Baker	Ryan Bole	Dave and Dianne Bustos	Hazel Cline
Connie Bales	Debbie Bonham	James and Patricia Butcher	Michelle Cline
Nancy Bales	Javan Bonham	Janette Butts	Ann Cole
Pam Bales	Jeffrey and Melanie Bonham	Jesse Cahue	W.G. and V.A. Colglazier
Sharon Bales	Pamela Bonham	Pedro Cahue	David Collins
Ball State University		Jack and Becky Cain	Patrick Collins
Linda Ballenger		Timothy Cain	Sandra Collins
Les and Kathy Bantz		Cecily Cale	The Community Foundation of Northern Virginia
John Barabe		Patrick and Rebecca Cale	Community Helping Hands Clothing Ministry
Richard Bargerhuff		Thomas and Nancy Cale	Susan Conroy
Charles Barnes		Jay and Angela Campbell	Stephen and Laura Coons
Michael and Bonnie Barnes		Rachel Campbell	

William and Carolyn Cooper	Ellenberger Brothers, Inc.	Keith and Carol Frauhiger	Chris Greene
J. Jedd and Linda Copenhaver	Robert and Judith Elliot	Roger and Dolly Frazier	Dallas and Elaine Griswold, Jr.
Norma Cougill	J. Bryan and Kandis Elliott	Mike and Barb Frazzell	Larry and Michelle Gross
Joan Courtney	Myra Elliott	Lori Freehill	Barb Grover
Phillip and Judy Cox	Ross and Cheryl Elwood	Phil and Myra Freel	Mike Guffey
Crabtree Photography	Jean Emmerson	Merrill and Cheryl Freeman	Gene and Julia Hainen
Bill and Sara Crabtree	Janice Emshwiller	Dugless and Peggy Sue Fugitt	Dorothy Hale
Jon Creek	Jill Enochs	Charles and Grace Fuller	Lloyd Hall
Dr. Gordon and Sandra Cripe	Robert and Jolene Erdmann	Kristie Fuller	Michael Shane and Julie Hall
Scot and Bobbi Croner	Elaine Ervin	David and Barbara Fuqua	Norma Hamilton
Robert Crouse	T. Eric Evans	Michael Furan	Diana Hammond
Lana Culver	Event Print	Lois Futrell	Jack and Peggy Hanley
John and Patricia Culy	Jacob Everett	Pat Gaither	Hardin Family LTD
Dale and Anne Cunningham	Dan Ewbank	Ann Gallagher	Partnership
Cycle Solutions, Inc.	Dr. and Mrs. Robert Ewbank	Jennifer Gallatin	Robert and Barbara Hardwick
Nathan and Melissa Danielson	Kelsey Ewbank	Patrice Gammon and Susan McDowell	Edward and Nancy Harlow
Ruth Daugherty	Eye Associates Group, LLC	Gannett Foundation	Kimberly Harlow
Dave's Car Corner	Fairlawn Church of Christ, Inc.	Darrell and Natalie Gardner	Mitch Harper
Thomas and Shelley Davey, Jr.	Farm Bureau Insurance	Eric and Dana Gardner	Hartford City Cemetery, Inc.
A. L. Davis	Farm Credit Mid America	Fredrick and Aneta Gardner	Hartford City Chamber of Commerce
Malvin and Mary Day	Noreen Faulkenberg	Christine Garrett	Hartford City Commons
The Dayton Foundation Hans and Sherry Tschudin Fund	Donald and Irene Feltt	Dean and J. Jeannine Garrett	Condominium Owners
Michael Dayton	Duke Feltt	Larry and Patti Garrett	Hartford City Elks Lodge
Austin and Ann Deardorff	Brett and Kristi Fernandes	Lawrence and Sandra Garrison	Hartford City Fireman's Association
David and Lupie Dell	Brian and Marilyn Fettig	Thomas and Joyce Gearheart	Hartford City High School Class of 1957
Department of Child Services	Kevin and Jennifer Fettig	General Motors Foundation	Hartford City High School Class of 1958
The Depot	Julie Fields	Gentis Tire & Service, Inc.	Hartford City Public Library Board and Staff
James and Glennis Dick	Mary Beth Fields	Dustin George	Hartford City Little League
Terry and Beverly Dickey	Fincannon Ford Mercury, Inc.	Frank Giammarino	Hartford City Paper
Tracie Disher	Danielle Fiorio	John and Connie Gibson	Hartford City Revitalization Program
Chad and Julie Dodd	First Baptist Church	Jack and Janice Gilland	Hartford City Rotary Club
James Dolan	First Financial Bank	Craig and Elaine Gillis	Curt and Sharon Hartley
Monte and Kris Dorton	First Merchants Bank	Richard and Renee Gillis	Joyce Hartley
David and Melissa Dow	First Option, Inc.	Jeffrey and Trudie Glancy	Michael and Mary Ellen Harvey
Mark and Susan Draves	Jeannine McClintic Fisher	Jimmie and Sharon Glancy	Dwayne Hathaway
Annette Dubois	Jeffery and Peggy Fisher	Andrew Glentzer	Health Occupations Students of America
Jeffrey Dugdale	Ruth Flatter-Oswalt	John and Jacqueline Godfrey	Tina Hedden
Saralee Schacht Dugdale	Ann Fletcher	Donald and Carolyn Goetz	Dian Heiser
Faylee Duncan	James Forcum	Richard and Patricia Goetz	Timothy and Barbara Helm
Frank and Betzie Duncan	John and Claudia Forcum	Scott Goldberg	William Hemmert
The Dunsmore Family Trust	Julie Forcum	Nancy Goldman	David Henderson
Katherine Dunsmore	Chelsie Ford	Arlene Goldstein	Mark and Susan Henderson
E & B Paving Inc.	Craig and Donna Ford	Gary and Kathy Goodspeed	William and Sandra Hess
Robert and Connie Eads	Francis Ford	Sue Gordy	Renda Heyerly
Ecowater of Hartford City	Gene and Mawusi Ford	Grace United Methodist Church	
Edward Jones Investments	Jerry and Mary Ford	Pamela Grace	
Deborah Ehrhart	Joyce Ford	Steve Grace	
Thomas Ehrhart	Margie Ford	Grant Blackford Mental Health, Inc.	
Michael and Franny Eikenbary	Lawrence and Kim Fox		
	Sonny and Karen Franks		

Rex Hiatt	Arthur and Jannett Jackson	Janice Land	Jeff and Kate Marshall
William and Joretta Hiday	Dorothy Jackson	James and Carolyn Landis	Mary Lou Marshall
Richard Hidy	Steven Jackson	Mary Jane Landis	Bruce and Sheryl Martin
Brad and Mary Elizabeth Hile	Walter and Janice Jackson	Dave and Carol Landon	Gary Martin
Larry and Denise Hile	Jefferson Township High School Class of 1953	Langdon Bros. Seed Corporation	Naomi Martin
Martha Sue Hill	William and Charlene Jennart	Larry and Virginia Langdon	Peg Martin
Rich and Kendra Hill	Jennerjahn Machine, Inc.	The Matthew and Karen Langdon Trust	Verna Martin
Gene and Jondajane Hix	Brian and Ruth Jennerjahn	Max and Sandra Langdon	Michael Martz
David Hodges	Chris and Kristie Jennerjahn	The Lanham Family Foundation	Ronald and Melanie Mason
Frederick Hoffman	Dean and Margie Jetter	Susan Lannoy	Beverly Matthews
Jay and Marie Holloway	Bob and Connie Johnson	Sharon Leach	Mattox Family Physicians, Inc.
Jacob and Diana Holsten	James and Frances Johnson	Eric and Emily Leas	Allen and Anita Mattson
Honegger, Ringger & Co.	Donna Jane Johnson-Adams	Jody Leas	Deborah Matus
David and Janet Honeywell	William and Suzanne Joiner	Ted and Linda Leas	Keith and Shirley Maves
Mont and Vivian Hoover	Jones Family Farms	Terry and Cathy Leas	Bruce and Shawna Mayberry
Wanda Hoover and Lisa Lamott	Dave Jones	Carolyn Sue Lechien	Mayco International, LLC
Sharon Hopkins	David P. and Sarah Lou Jones	Elden and Patricia Leeth	Michael McCaffrey
Darwin and Janice Horine	Larry and Geraldine Jones	John and Louise Lemke	Silas and Priscilla McCaffrey
Amy Houser	Michael and Betsy Jones	James and Loretta Lennon	McCammon Farms, Inc.
Janet Howard	Robert and Carole Jones	Madeline Lennon	McCammon Trucking Inc.
Barry and Elizabeth Hudson	Roberta Jones	R. Michael Levert	Darrell and Patricia McCammon
Ricky and Linda Hudson	Wilbur and Ruth Jones	Sue Lewellen	Dick and Sandy McCammon
Huffman Farm	Thomas and Mary Jo Jung	Deborah Light	James McCarthy
Edgar J. Huffman	Genevive Kamer	Betty Lightle	John McCarthy
Jane Huffman	Kathleen Kellogg	Lilly Endowment Inc.	Julie McCarthy
Huggins Auto Sales	Lloyd and Patricia Kellogg	David and Judith LIndblom	Helen McCollum
Carolyn Hughes	Keplinger Funeral Home	Melinda Lindell	Larry and Judith McCollum
James Hughes	Virginia Kilgore	Elbert and Pamela Lindsey, Jr.	Stephen McCollum
Liz Hughes	Blake King	David and Eujania Littler	Janet McDonald
Tracy Hughes	David and Karen Kinser	Jerry and Lesley Love	Linda McGalliard
Margaret Hunnicutt	Jane Rawlings Kirkendall	Jack and Linda Loxley	McGavic Outdoor Power Equipment, Inc.
Linda Hunt	James and Dolly Kiser	Ann Ludwig	Kathryn McGeath
Chuck and Deb Hurst	Kitchen Kemists Extension Homemakers Club	Brian and Mary Ludwig	Bryan and Jennifer Dill McGill
Laura Hutson	Brian and Jessica Kitterman	Oreta Ludwig	Vickie Sue McGrady
Hy-Line North America, LLC	Karen Kitterman	Marvin and June Luellen	William and Alyce McGriff
Independence Church of Christ	Kiwanis Club of Hartford City	Jane Maddox	Larae McGunegill
Independent Colleges of Indiana	James and Lou Kline	John Maddox, Jr.	David and Patti McVicker
Indiana Lake Ladies Golf League	Kenneth and Marcia Kline	Kevin Mahan	Bill Meacham
Indiana Democratic Party State Central	Melissa Klink	Mahan/State Farm Agency	Camille Mealy
Indiana Grantmakers Alliance	Jerome and Lucy Kluessendorf	Kurt and Jennifer Mahlich	J. Lawrence and Linda Mealy
Indiana United Methodist Church, Inc.	Brandon and Briana Knoll	Erma Mahorney	Merck Foundation
Indiana University Health SaxonyHospital	Cynthia Knot	Herbert and Birgit Mains	Gerald and Serena Merkel
IU Health Blackford Hospital	Nancy Knox	William and Maxie Malott	Merry Mades Home Extension Club
JR Flooring	Wanda Knuckles	Richard and Margaret Malueg	Marjorie Michaud
Jackson Family Farms, LLC	E. Ardena Kreeger	Arlin and Constance Mann	James and Pamela Miler
	L. M. Henderson and Company, LLC	Scott and Kimberly Marcus	Melissa Miller
	Taylor and Joan Ladd	Hugh and Judith Markin	Shirley Miller
		Thomas and Shirley Marquell	Tod and Reda Theurer Miller

Wm. Stuart and Cynthia Mills	Merrill and Reda Belle	Michael and Karen Prouty	C. A. Rumble
Danny and Phyllis Millsbaugh	Nottingham	Psi Iota Xi Alpha Mu Chapter	Russ' Computer Repair and
Nora Minneman	NRP of Indiana	Larry Pulley	Service, LLC
Minnetrista	Joan Peterson Nuckols	Quillen Farms	Michael Sachs
Diana Mitchell	C. Patrick and Jeannine	Lynne Ransom	Pete and Kelli Sanidas
Monarch Beverage Co., Inc.	O'Connell	Raymond James Financial	Thomas Saxon
Garry Monroe	Pat and Wilma O'Hern	Services, Inc.	Clifford Schacht
Charles and Sarah	OJC Trucking, Inc.	Albert and Doris Rea	Paul and Cheryl Schacht
Montgomery	Old National Trust Company	Dwight Rea	Tiffany Schackelford
Diana Montgomery	Rae Ann O'Neill	Frederick and Alberta Read	The Schantz Charitable
Hap Montgomery	Open Door Dental Clinic Staff	Barbara Reasoner	Remainder Unitrust
Londa Montgomery	Lynn and Carolyn Osborn	Pat Redmond	Patricia Schantz
Montpelier Alumni	Steven Osborn	Patrick and Melissa Redmond	Tom and Jane Schendel
Association	Kenny and Julie Oswalt	Reid Family Dentistry PC	Otto and Nancy Schley
Montpelier Chamber of	Patricia L. Oswalt	Anita Reid	Dianna Schmidt
Commerce	Pattie Oswalt	Michael and Carma Reidy	Steven Schmuck
Montpelier Glove and Safety	Melinda Otwinowski	R. Kevin and Debbie Reidy	Spencer Schnaitter
Products, Inc.	Connie Outcalt	Charles Reigel	James and Nancy Schorey
Montpelier Pony and Saddle	Betty Parker	Jane Rench	Timothy and Paula Schortgen
Club	Fred and Connie Parker	Lois Rench	Paul Schriver
Linda Morgan	Larry and Carol Parker	Robert Renner	Fred and Kay Schrope
William Monn, Jr.	Richard and Sharon Parker	Wilma Renner	Ann Schuhmacher
Brian Morris	John and Mary June Parks	Research Club	James and Jull Schuhmacher
Judy Morris	Michael Parks	W. Rocchi Reynolds	David and Helen Schultz
Nancy Morris	Thomas and Kara Parsons, Jr.	Aaron and Matthew Rhodes	Jonathan and Jane Schuster
Louanna Mossburg	Kenneth and Brenda Payne	Amy Rhodes	Geofrey and Caroly Schwartz
Muncie Power Products, Inc.	Wilma Payne	Cory and Sandra Rhodes	Natalie Ann Scott and
Mutual Bank	Rick and Deb Pearson	Rhoton Farms & Excavating	Joseph O. Adams
Stephen and Meghan Myron	Kimberly Pease	Theresa Rice	Shawna Scott-Hamilton
Montelle Needler	Gary and Jane Peavler	Michael Richardson	Steven and Diana Seelig
Chris and Sandra Neel	Greg Peavler	Karen Riddle	Robert Segally
Sybil Neel	William Peckinpough, CLU	Sherri Riggs	Jim and Karen Shadle
Neff Insurance Agency	Steven and Tracee Pennington	Corinne Rigoni	Gary and Sharon Shannon
David Neff	Ralph and Joyce Penrod	Sally Rinker	Charles and Karen Sharp
Denise Neff	Bob Perry	Estate of Virginia Risinger	James and Victoria Sharp
Christopher Nestleroad	John Peterson	Larry Ritenour	Lowell and Kathleen Sharp
Bradley and Cynthis Neterer	Elonda Pethtel	River Terrace Jewels Red	Sharon Sharp
Bobby Newman and Mary	Petoskey Plastics, Inc.	Hatters	Thomas and Kelly Sharp
Louise Talbert	Richard and Carolyn Petro	Glenn and Sandra Robbins	Shideler Grain
The News-Times	Anthony Petrucciani	William and Kathy Robbins	Terry and Barbara Shields Jack
S. D. and Leslie Newton	Stacey Pfeffer	Robert C. Nugent & Associates	and Teri Shiflett
Diane Nichols	Terry and Wanda Pfeffer	Joel and Connie Roberts	Gary and E. Joan Shrader
Jeffrey and Shelli Nickols	Bonnie Pickering	Kirk and Jacqueline Robinett	Sandra Shroyer
Jerrid and Misty Nickols	Marge Piquet	Thomas and Doris Robinson	Sierra Shull
Sherry Nickols	Pizza Hut of Hartford City	Clyde and Ruth Rogers	Sigma Phi Gamma
Northside Neighborhood	Pleasantdale United Methodist	David and Patricia Rogers	Internationa Sorority
Association	Church	Eric Rogers	Sigma Phi Gamma Alpha
Timothy and Sandy Norton	PM Company, LLC	Mary Rogers	Chapter
Dennis and Roxann	Jerry and Patricia Poulson	Brian and Cheryl Romine	Christopher and Deborah Sills
Nottingham	Printer's Express	Marlene Roth	Fredrick and Phyllis Sills
Max and Susie Nottingham	Ted and Christine Prosser	Timothy and Sarah Row	Gerald and Linda Sills

Susan Sills	Chad and Jane Ann Stroble	Trim Masters Charitable Foundation	Jerry and Penny White
Allen and Elizabeth Simison	Helen Stroble	Joseph and Carol Trimmer	Tony and Lori White
Tom Simison	Jerry and Charlotte Stults	Trowel & Error Garden Club	Victor Whitehead
Kimberly Sims	Kristy Stultz	Joyce Truitt	Whiting & Company, LLC
Gregg and Vicki Sinclair	Betty Stump	Truth Seekers Sunday School Class	Ron Whitston
Milus Skidmore	Karen Sulit	Sandra Tucker	Dean and Joann Wilcoxin
James and LaRea Slater	SummerFest Committee	Brian Twibell	Annie Williams
Brad and Amanda Slentz	Summers, Carroll, Whisler LLC	Helen Twibell	Bryce and Barbara Willman
Nellie Sleppy	Janet Sutton	Jeffery and Elizabeth Twibell	J. Nolan Willman
Gary and Sally Sloan	Russ Sutton	John and Delena Twibell	Randall and Julie Willman
Linda Sluder	Michael and Rochelle Tabor	Ronald and Victoria Twibell	Cathy Willmann
Smith Consulting, Inc.	Charles and Carol Tait	Larry and Doris Tyler	Clara Willmann
Smith Insurance Services, Inc.	Joan Tardy	Wilfred Ufkes	David and Phyllis Willmann
Bill Smith	Edith Tarter	Anthony and Lisa Uggen	Eldon and Ann Willmann
Brian and Cynthia Smith	Max and Patricia Tarter	Orville and Doris Uggen, Jr.	John Willmann
Emily Smith	Mark and Suzanne Taylor	The Valenzano Family Trust	Lewis and Joyce Willmann
Glen Smith DDS	Rob Taylor	Van Ewing	Michael Willmann
James and Janet Smith	Taylor Financial LLC	Sue Van Horn	Nancy Willmann
Joseph Smith	Kara Tedder	James Van Vierah, Jr.	Doris Wilson
Kathryn Smith	Marla Templeton	Helga Vance	Margaret Wilson
Marianna Smith	Steve and Sharon Terhune	Gary and Donna Verona	Deborah Winchester
Paula Smith	Shirley Thacker	VIA Credit Union	Gary and Jane Winder
Randy and Judy Smith	Maria Tharp	Betty Vischer	The Windsor Families
Robert and Susan Smith	Carl and Elaine Thieme	C. David and Sandra Vogt, Jr.	Brent and Sonja Winebrenner
Glenn and Gerry Snyder	Douglas and Erin Hallagan Thieme	Judith Wagoner	Jerry and Mary Jo Winger
Judith Soddors	Diane Thomas	Charles and Betty Walker	Winter Wan-derers
Jeffrey and Bernie Sones	Larry and Jo Ann Thomas	Drew and Michelle Walker	Snowmobile Club
Sons of Amvets	Max and Liz Thomas	Fred and Linda Walker	Elizabeth Witt
Southside Elementary School	Ed and Rhonda Thurman	Walmart Stores, Inc. Distribution Center 7055	James and Diane Wittenauer
Southside Elementary School Cafeteria	James Thurman	Krista Wanko	Ronald and Karyl Wolf
Donald and Susan Sprentall	John and Debbie Thurman	Judith Warner	William and Nancy Wolverton
Phillip and Mardelle St. John	Richard and Barbara Thurman	The Leatha C. Warner Trust	Linda Workman
Robert Ray Stafford	Tiann Coy Designs, Inc.	Marian Warner	R. P. and Anita Wright
John Stallsmith	TK Trucking, Inc.	Ralph and Connie Warner	Rick Wyerick
Juanita Stallsmith	TL Smith Farms, LLC	Judy Washburn	Robert and Susan Wyne
Linda Stanley	Fred and Susie Tobey	Ted and Kay Waters	John Yadon
Russell and Joan Stanley	Fred and Maureen Toenges	Tod Waters	Iris Yeager
STAR Financial Bank	Town Financial Corporation	Richard and Jacci Weaver	Dean Young
Rita Steinbrunner	Towne Meadow Elementary School	Mike Webster	Minnetta Kay Zeigler
Jeffrey and Lisa Stephens	Alan and Ruth Ann Townsend	Lisa Weeks	Diane Zeskert
Stevens Carpet Care and Restoration, LLC	Marjorie Ann Townsend	James and Pamela Weiseman	
Brian and Lori Stimpson	Mark Townsend	Tim Werner	
Joanne Stoll	Jerry and Linda Trant	J. Anne Werry	
June Storms	Jim and Patricia Trant	Steven and Arlene West	
Betty Strait	Judy Trees	Donald Westrick	
Frederick and Joan Strine	Tri Kappa Associates	Helen White	
Roger and Mary Kay Strine	Tri Kappa Beta Xi Chapter		

Memorials 2014 -2016

James (Jim) Adkins, Sr.
Jayne Allen
Pat Armstrong
Donald Voss Badgley
Robert Bales
Steven Bell
Alberta Mae Bennett
Gerald C. Berry
Florence Bradley
Bob Brinkerhoff
Tom Brown
Emma Byers
Joan Cale
Phyllis Chaney
Steve Chaney
Audremae Clamme
Vicki Jo Clamme
Steven D. Cook
Melissa Cooper
Richard Daniel
Patty Davis
Sondra Davis
Richard Dick
Harold Dill
Dr. Charles Dudgeon
Jack Ely
Lester Enochs
Bill Fansel
Mary Ann Fettig
Jeannine Fisher
Lane Fisher
Walter Fisher
Ruth E. Flatter
Jack Forcum
Clayton Ford
William (Bill) Fread
Donna Fry
Jack Fry
Sarah Garrett
Relda Fulton Gerald
Carla Gilland
Charles Gilland
Evelyn Gilland

Patricia Goetz
Esther Gothrup
Anita Grace
Floyd Griffith
Lowell Hardin
John Hardwick
Norma Hardwick
Dan Heiser
Jennifer Henderson
Molene Holcomb
Charles Hughes
Debra Hughes
Kenneth Hurst, Sr.
Vickie Jackson
Brian Jennerjahn
James (Jim) Johnson
Maxine Johnson
Steve Kemp
Jerry Kirkwood
Martha Jean Kiser
Frank Knez
Esther Knox
Michael Knuckles
Margaret Layman
Faye Lenz
Bonnie Love
Robert Ludwig
Dr. Raymond Maddox
Matilda Maurer
Patricia Ann Maves
Paula May
Andy McCaffery
Larry McCallister
Melvin McCollum
Madonna McHenry
Mike McKenna
Bonnie Meyer
Charles Edward Miles
Judy Mills
Nora Mae Minneman
Larry Monroe
Eric Moore
Monte Needler
Kenneth Neff
Jorden W. Nickols

Linda Diana Oatis
Robert Oswalt
Bernard J. Pace
Parents of Carol Tait
Dr. George Parks
Kenny Payne
Jerry Poulson
Pete Redmond
Joann Rees
Kenny Rees
Kenny Rench
Robert Renner
Merrill Rhodes
Jim Richards
Dean Rinker
Frank Rodgers
Freida M. Quillen Rogers
Patricia Schantz
William Schantz
John Schermerhorn
Dwight Schmidt
Robert Schooley
Daniel Schrope
Sue Schrope
Thomas Schrope
Fountine Schwartzkopf
John Scott
Wilbur C. Shadle
Charles Sharp
John "J. R." Shull
Robert (Bob) Smith
Donald Richard (Dick) Smith
Janet Smith
Keith E. Sonner
Aletha Spaulding
Bonnie Stath
Betty Sutton
James Sutton
Anita Tatman
Amy Thurman
Jo Touring
Wayne Townsend
Russell Trees
Nancy Troyer
Don Twibell

John Twibell
Betty Ufkes
Lorna Wagner
Kenny Warner
Jessie Welch
Mary Welge
Tyler Williams
Katelin Williamson
Carol Wolfe
Patricia Wolverton
John Wrestler

IN HONOR 2014 -2016

Peggy Armstrong
Carla Ballenger
"Santa" Jerry Brown
Rick and Jeannie Cain Family
Myra Elliott
Thomas Ehrhart
Dr. Indra Frank
Donald Goetz
Sarah Lou Jones
Benjamin Oswalt
Dale Richardson
Charles and Betty Walker
J. Nolan and Joanne Willman

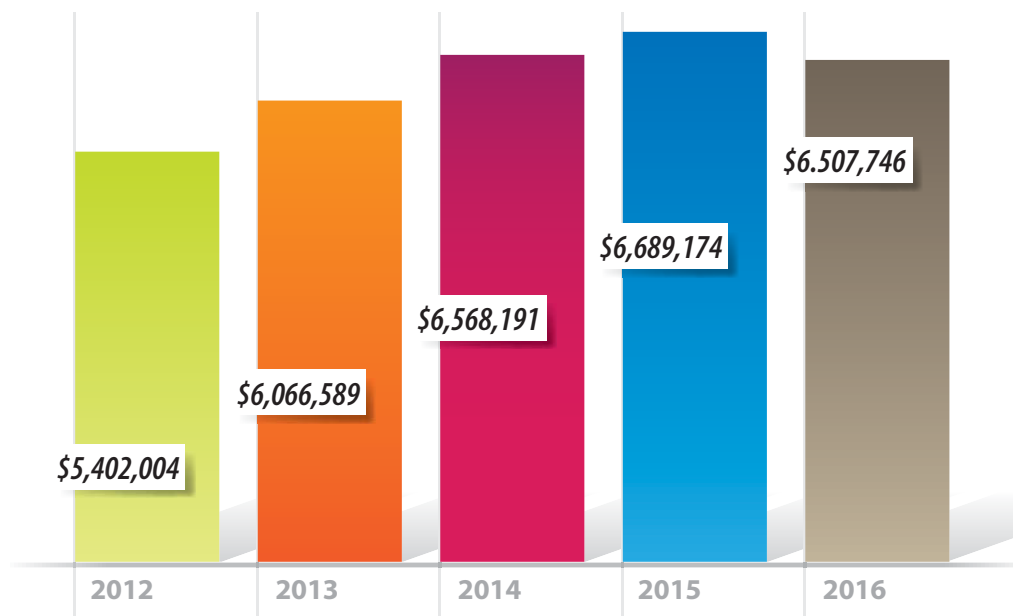
Statement of Financial Position

December 31, 2014 and 2015 and 2016

ASSETS	2016*	2015	2014
Cash and cash equivalents	\$ 130,530	\$ 531,969	\$ 755,573
Property and equipment, net	23,004	25,430	15,493
Investments; at market	6,354,212	5,510,420	5,797,125
Total assets	\$ 6,507,746	\$ 6,689,174	6,568,191
LIABILITIES			
Accounts payable	\$ 1,013	\$ 5,809	\$ 15,271
Accrued wages	8,141	6,812	8,676
Accrued expenses	-	2,289	1,282
Assets held for others	82,841	159,845	105,854
Charitable gift annuity	-	-	76,815
Total liabilities	\$ 91,995	\$ 174,755	\$ 207,898
NET ASSETS			
Unrestricted	\$ 1,363,288	\$ 1,686,911	\$ 1,832,422
Temporarily restricted	2,668,251	2,587,697	2,294,751
Permanently restricted	2,384,212	2,239,811	2,233,120
Total liabilities and net assets	\$ 6,507,746	\$ 6,689,174	\$ 6,568,191

*Complete audited financial statements available at www.blackfordcofoundation.org. 2016 financial information is unaudited.

History of Assets

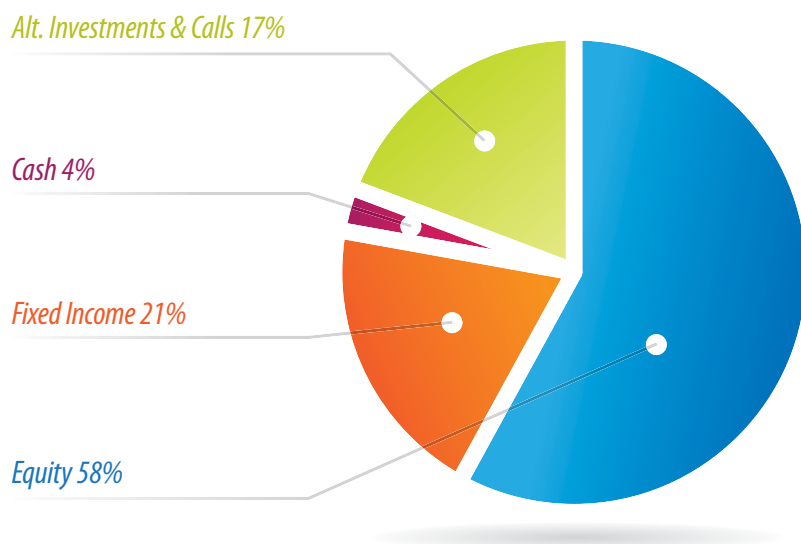


Statement of Income and Expenses

December 31, 2014 and 2015 and 2016

INCOME	2016*	2015	2014
Contributions	\$ 152,879	\$ 855,890	\$ 278,074
Grants	-	-	500,000
Securities gains (losses)	357,614	(112,461)	304,381
Other income	7,252	10,650	7,725
Total income	\$ 517,745	\$ 754,079	\$ 1,090,180
EXPENSES			
Grants	\$ 209,309	\$ 217,846	\$ 224,651
Scholarships	107,640	131,900	147,435
Other expenses	71,397	41,832	47,642
Program service expenses	51,586	74,481	86,599
Management and general expenses	166,441	125,494	112,328
Fundraising expenses	10,040	8,400	12,335
Total expenses	\$ 616,413	\$ 599,953	\$ 630,990
Change in net assets	\$ (98,668)	\$ 154,126	\$ 459,190
Net assets at beginning of year	\$ 6,514,419	\$ 6,360,293	\$ 5,901,103
Net assets at end of year	\$ 6,415,751	\$ 6,514,419	\$ 6,360,293

Asset Allocation



The Blackford County Community Foundation Board of Directors graciously accepts donors' contributions to the causes they care about and in turn puts those contributions to work in the community to improve the lives of local residents.



2016 BOARD OF DIRECTORS

Lisa C. Weeks, President
Jon K. Creek, Vice President
Peggy L. Fisher, Treasurer
Julie A. Forcum, Secretary
Robert W. Benbow
Darrell E. Brown
G. Andrew Glentzer
Diana L. Holsten
David K. Neff
Mark W. Townsend

DIRECTORS RETIRING

2014 - 2016

Gary D. Cheesman
Maxie A. Malott
J. Nolan Willman

2016 COMMITTEES

Finance/Investment Committee

Vincent Cimino, Chair
Robert Benbow
Jon Creek
Julie Forcum
Diana Holsten
Lisa Weeks

Grants Committee

Jon Creek, Chair
Rita Barker-Bell
Darrell Brown
Julie Forcum
Pam Hurley
Lisa Weeks
Ron Wolf

Marketing/Public Relations Committee

Peggy Fisher, Chair
Robert Benbow
Darrell Brown
Andy Glentzer
Maxie Malott
David Neff
Mark Townsend

Our Mission is...

Enhancing the quality of life for Blackford County residents by

- encouraging and assisting donors,
- providing financial management,
- making philanthropic grants, and
- serving as a catalyst for positive change.

IN SHORT, WE ARE IN THE BUSINESS OF IMPROVING LIFE IN BLACKFORD COUNTY BY HELPING YOU HELP OTHERS—FOREVER!

Blackford County Community Foundation staff members pose with the 2016 Blackford County/Indiana Bicentennial bison. Blackford High School art students painted the historical scenes and symbols depicting the history of Blackford County on this bison now on display at the City Building in Hartford City.

The staff includes Dave Bowman, Executive Director; and (from left) Linda Walker, Projects and Publications, and Elizabeth Witt, Office Manager.

We are always ready to serve you. Stop in for a visit soon.





Blackford County
Community Foundation

